

# Millville Public Charter School

1101 Wheaton Avenue, Suite 220 Millville, NJ 08332 | Phone: 856-506-8143

February 1, 2017

Re: Pick-up, Parking and Dismissal

Dear Parents and Guardians,

Our school experiences congestion and parking issues during arrival and dismissal times. Our number one concern is the safety of our students and families. The purpose of this letter is to review the traffic pattern and parking situation to ensure safe procedures.

## Morning Arrival/Dismissal

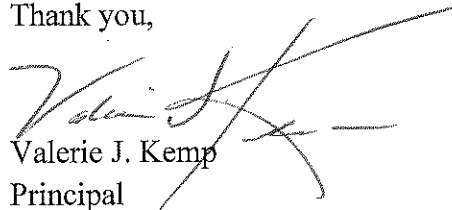
- All drop off vehicles must enter through the MPCS driveway only-see map driveway labeled #1
- Vehicles should not enter via the exit driveway that leads to the Wheaton entrance-see map driveway labeled #2
- Vehicles should not stop on Wheaton Avenue to let students out
- Vehicles should not enter through the G Street entrance
- Pull up as far as possible in the drop of zone-see map labeled #3

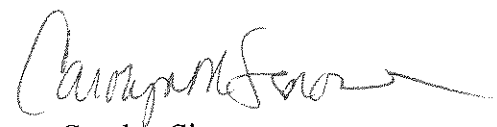
## Dismissal

- During dismissal, we ask that you are considerate of other vehicles by not parking in the pickup zone, double parking or obstructing emergency access to the building-see map #3
- Early dismissal will be honored until 3:30 pm. After that point, we ask that you allow us to properly prepare the school and students for our regularly scheduled dismissal time beginning at 3:45 pm

Finally, we ask that you share this information with approved adults listed to transport your student to and from school. We are requesting your cooperation and appreciate your help in making arrival/ dismissal of all our students quick and safe.

Thank you,

  
Valerie J. Kemp  
Principal

  
Carolyn Sinone  
Vice Principal

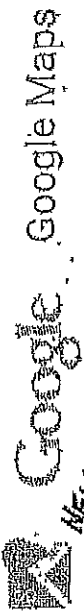
8/21/2015

ARRIVAL TIMES

MPCS 7:45 - 8:00 AM

PICK-UP

MPCS 3:45 - 4:00 pm



Google Maps

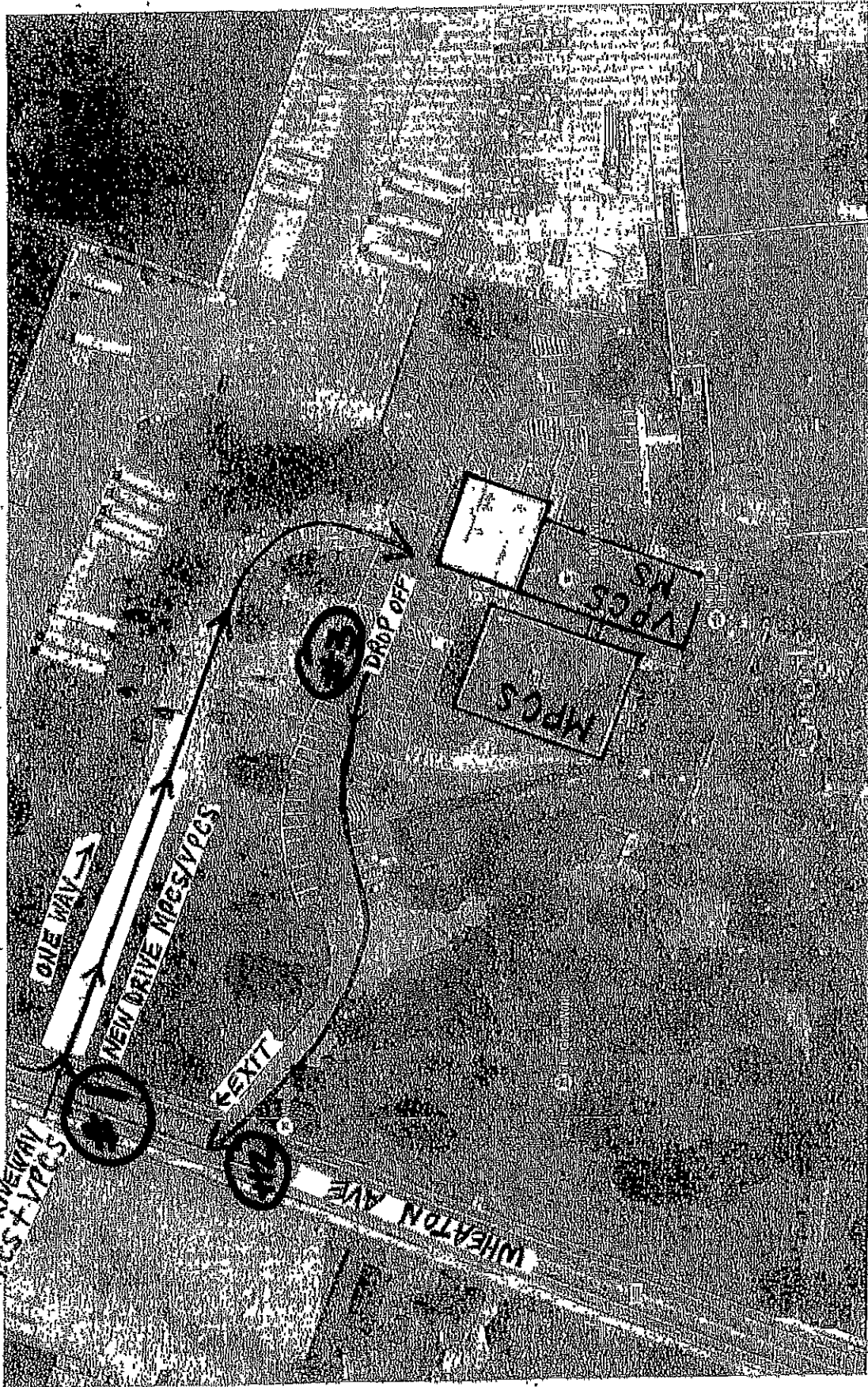


Image ©2015 Google, Map data ©2015 Google 50 ft